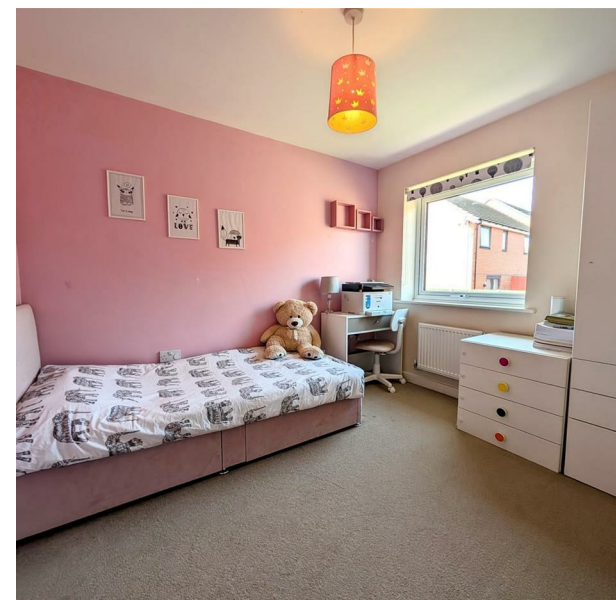


Turnstone Road, Walsall, WS3 1EP

£1,200 Per Month

Council Tax Band: B





Nestled in the charming area of Turnstone Road, Walsall, this delightful three-bedroom semi-detached house offers a perfect blend of modern living and convenient location. Built in 2017, the property spans an impressive 775 square feet, providing ample space for families or professionals seeking a comfortable home.

Upon entering, you are welcomed into a good-sized lounge. The modern kitchen is well-equipped, with there also being a downstairs WC.

Upstairs the property boasts three bedrooms and a lovely modern bathroom. The location is particularly appealing, situated next to a canal and a small park. Families will also appreciate the proximity to local schools, making the morning school run a breeze.

For those with vehicles, the property includes a parking spot that comfortably accommodates two cars, adding to the convenience of this lovely home.

Guarantor is required.

Council Tax Band - B

EPC Rating - B

This property is a must view! Especially for young families! Call us to book in a viewing now!



Open House Bloxwich



Energy Efficiency Rating		
	Current	Potential
Very energy efficient - lower running costs		
(92 plus) A		95
(81-91) B	83	
(69-80) C		
(55-68) D		
(39-54) E		
(21-38) F		
(1-20) G		
Not energy efficient - higher running costs		
England & Wales	EU Directive 2002/91/EC	